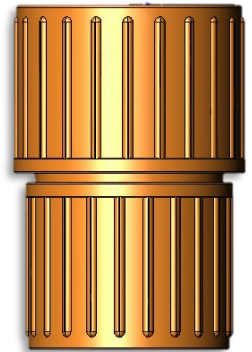


SlimFit Union™ (3/4" CPVC Pipe Union)

The SlimFit Union offers a sleek and innovative solution for installing 3/4" Air Sampling Smoke Detection (ASD) pipe networks side by side or in tight spaces. Unlike traditional bulky pipe unions, this compact design allows pipes to be positioned side by side, close to surfaces, maximizing efficiency without compromising strength or reliability.

Ideal for space-constrained environments, the SlimFit Union delivers both durability and ease of installation, making it a superior choice for ASD sampling pipe network installations.

The SlimFit Union is constructed of orange CPVC, making it compatible physically and aesthetically with traditional ASD sampling pipe networks. Provides a leak-proof connection once tightened. Ribbed design provides texture for unscrewing and detaching.



SlimFit 34U-CPVC

Features

- Compact design permits side by side, tight space installation
- Compatible with 3/4" ASD Sampling Pipe
- Inside diameter matches ASD pipe networks. Does not restrict or reduce airflow
- Simple, airtight, and removeable without tools
- Buna-N O-Ring provides reliable chemical resistant seal
- Schedule 40 CPVC construction
- 0 to 200°F operating temperature
- Lead free, corrosion free, non-toxic
- Permits rotation of pipe without needing to loosen or break seal

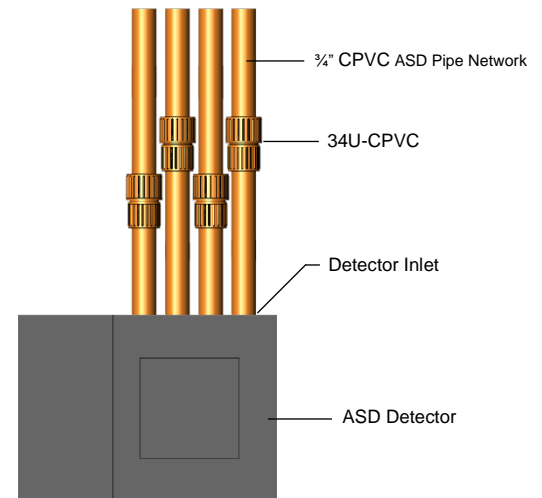
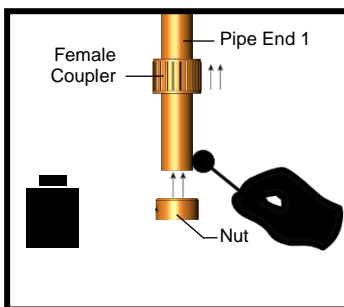


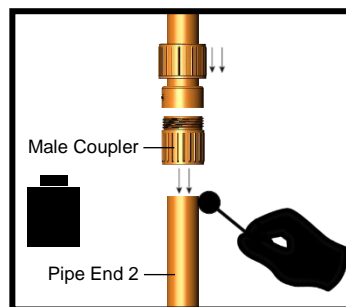
Fig. 1 Side by Side Example

Instructions



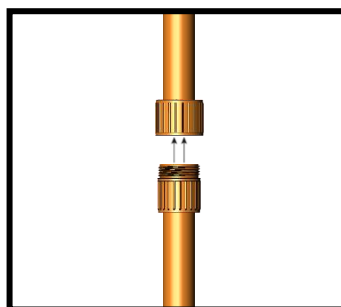
STEP 1

Slide female coupler over one end of pipe. Lightly coat mating surfaces with CPVC one-step cement then push on coupler nut to weld in place.



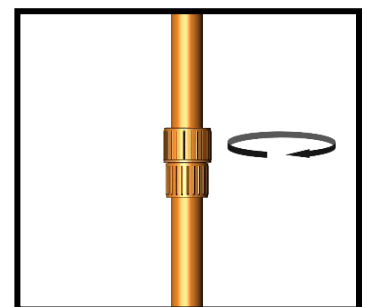
STEP 2

On mating pipe end, lightly coat mating surfaces with CPVC one-step cement then slide on male coupler over end of pipe. Drop female coupler over nut.



STEP 3

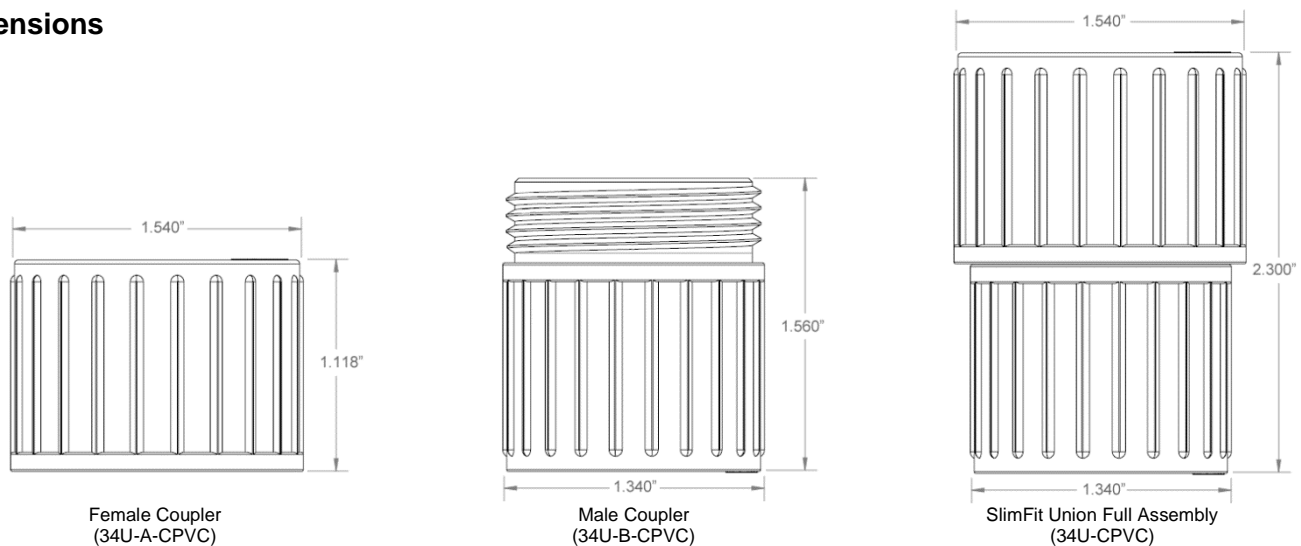
Bring the female and male couplers together along with the pipe sections they are connected to.



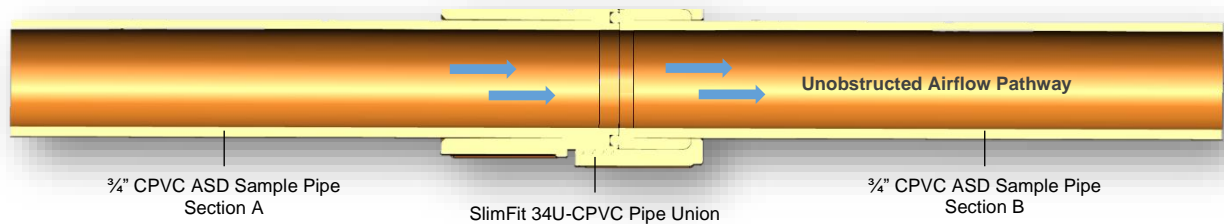
STEP 4

Rotate the female coupler clockwise and hand tighten. Do not overtighten. To disconnect the two pipe halves, turn female coupler counterclockwise.

Dimensions



Cross Section



Specifying

ASD sampling pipe networks shall be fitted with a removeable pipe union prior to entry into the detector inlet to permit removal of the pipe network from the detector, or at other points along the pipe network without disturbing the pipe installation. Pipe unions shall also be used where sampling pipes are intended to be rotatable, whereas to orient sample points in accordance with design objectives. Pipe unions shall be of an appropriate size allowing sampling pipe networks to be positioned side by side, or within proximity of mounting surfaces, without requiring additional materials such as elbows, offsets, or spacers to do so. Pipe unions shall be constructed of the same material type as the sampling pipe network and be of the same color for aesthetic purposes, and to easily distinguish their association with the sampling pipe network. Pipe unions shall provide a leakproof connection between pipe sections, and able to be assembled and disassembled by hand, without the need of additional tools. The internal diameter of the pipe union shall be sized equal to the internal diameter of the sampling pipe network and not restrain or restrict the pathway for airflow in any way. Pipe unions shall at a minimum be Schedule 40, be lead free, corrosion resistant, and non-toxic.

Ordering Info (www.asdaccessories.com)

- 34U-CPVC (3/4" CPVC SlimFit Pipe Union)